

The Link

ST FRANCIS • OLD SARUM • LONGHEDGE

APRIL 23



WHAT'S ON AT HOPE CHURCH

Easter Egg Hunt
Easter Sunday Brunch

MISSION FOCUS

Mission Aviation
Fellowship

WHAT'S ON AT ST FRANCIS

Holy week services
6am Easter sunrise service
Strictly Knit and Natter
50+ Meet the Vicar!
APCM

Contacts

St Francis Church
Hope Church

Role	Name	Phone	Email
Vicar	Jean de Garis	01722 334214	vicar@st-francischurch.org.uk
Curate	Mary Terry	01722 349 886	curate@st-francischurch.org.uk
Hope Church	Will & Sophie Burditt	01722 237318	oldsarum@st-francischurch.org.uk
Parish Office	Jane Franchi	01722 413644	admin@st-francischurch.org.uk
Bookings Enquiries	Alan Goldie	01722 329114	asac.goldie@gmail.com
Children & Family	Katie Ollivierre	07899 962057	family@st-francischurch.org.uk
Youth	Sophie Stokes	01722 413644	youth@st-francischurch.org.uk
Church Warden	Chris Taylor	01722 338312	st.francis.warden@gmail.com
Church Warden	Tom Wilkins		tomchurchwarden@gmail.com
Safeguarding St F	Karen Scott	01722 410381	safeguarding@st-francischurch.org.uk
Safeguarding Hope	Jean Filtness	01722 330728	Jeanfiltness@gmail.com

Worship at St Francis

REGULAR SUNDAY SERVICES

9.30AM FRIENDLY TRADITIONAL SERVICE

11AM FAMILY SERVICE WITH CHILDREN'S GROUPS

7PM 1ST SUNDAY BIBLE FOCUS

7PM 3RD SUNDAY ENCOUNTER

REFRESHMENTS ARE SERVED AT 10.30AM

HOLY WEEK

2nd April Palm Sunday

Types of Power

Philippians 2.5-11 / Matthew 21.1-11

BIBLE FOCUS 7PM

Mon 3rd–Wed 5th Compline

on Zoom 9 pm

Maundy Thurs 7.30 pm

Holy Communion / Foot washing

Good Friday 2–3 pm

At the Cross

9TH APRIL EASTER SUNDAY - RESURRECTION

Churches Together Sunrise Service 6am

at Old Sarum Cathedral Ruins

Services at 9.30 & 11am at St Francis

Colossians 3.1-4 / Matthew 28.1-10

16th April

Reasons for Hope

Romans 5.1-10 1 Peter 1.3-9

ENCOUNTER 7PM at St Paul's Church

23rd April

Hope makes us different

Exodus 33.12-17 1 Peter 1.17-23

30th April 10.30 Annual Parochial

Church Meeting (APCM) 10.30 joint

service together with HOPE CHURCH

EVENSONG AT ST LAWRENCE – New time from April at 6pm

Every third Sunday in the month St Lawrence at Stratford-sub-Castle holds an Evensong Service which is supported by the St Francis choir. It is a joint service to which all parishioners from all our 3 churches in the benefice are very welcome, as they are any Sunday at 10am.

www.st-francischurch.org.uk

2023 APRIL

LETTER FROM THE VICARAGE

Christians world-wide are preparing to remember the central events of our faith. After the party atmosphere when Jesus enters Jerusalem on **Palm Sunday**, he experiences the whole range of human emotions over the **Three Holy Days**:

- Maundy Thursday:** Jesus has his Last Supper with his friends
Good Friday: Jesus is flogged, crucified and buried in a tomb
Easter Day: Jesus is raised to life by the power of God

Part of the power of the Easter message is that it echoes our experience as individuals and communities: death and new life.

The theme of death and resurrection is the great narrative theme of the Old Testament. We read it in the account of Noah – death and then new life. We also see it in the whole history of Israel: dying as a nation in exile, and then resurrected as they return from their captivity.

To be a follower of Jesus means that we trust that God can transpose this Grand Narrative of death and resurrection onto our lives. We know we shall die, but we believe that in his love and power, God will also raise us with Christ to eternal life.

Old Church buildings often show the same pattern: falling in decay or ruins, and then being re-imagined and redeveloped in beautiful new ways.

We'll be very aware of this on **Easter Sunday** morning. Many followers of Jesus from different local churches will be gathering at **6 am** in the ruins of the old cathedral at the top of Old Sarum as we welcome Easter with a service of praise and worship.

The ruined body of Jesus, broken on the cross, was raised to new and eternal life on Easter Day. So in the ruins of an old building, we will celebrate the new thing that God has done and what he will do for each of us as we trust in him.

On behalf of the all the Christian Churches I warmly invite you to share in our special services from Palm Sunday to Easter Sunday.

Please be in touch with me if you'd like to find out more.
With Christian greetings,

Jean de Garis
Vicar of St Francis, St Lawrence and Hope Church
www.st-francischurch.org.uk
01722 334214 / vicar@st-francischurch.org.uk



Holy Week

WHAT'S ON AT ST FRANCIS

STRICTLY COME LADIES

KNIT AND NATTER

If you would like to support the Shoe Box appeal, come and join the Knit and Natter session at 7.30pm on Friday April 21st in The Beatrice Room. Patterns available for a simple teddybear or a woolly hat. Bring along baby wool and size 4mm needles for the Teddies or double knitting wool and both 4mm and 3.25 mm needles for the hats. Depending on size, the hats take between 65-80gm of wool. Bring your own pattern, wool and needles if you prefer to knit baby clothes. If you are not a knitter just come for a natter!! Refreshments provided. For more information contact jacky.macleod1@ntlworld.com, Jenny Pankhurst Tel: 328761 April Hall Tel: 414296

St Francis Community Singers

If you like singing come and join us at St Francis on Mondays from 3.00pm - 4.00pm

Tea and biscuits beforehand at 2.30pm

We have a super, well qualified, young bubbly leader who always gets us laughing!

It's all very informal No audition! £5 a session (first session free). Please contact Di Webb on 07733 433615 or the Church Office for more information




50 *and beyond...*

50s and Beyond is a St Francis based fellowship and service group, focused on people 50+ in age. We have 10-12 events per year which are open to the community.

Thursday, April 20 12:30

Interested in learning more about St Francis and its vicar? Join us for Lunch with the Vicar – Bring your own lunch and questions to this “up close and personal” time with Jean in the Beatrice Room at St Francis Church. Soft drinks and coffee and tea will be provided.

For more information, please contact Kris Richardson Smith or John Smith at 07963 500 331 or email, Kris@richardson.net



The Bereavement
Journey

ST FRANCIS

2023

Are you grieving the death of a loved one or struggling with the long term effects of loss? A six session course will soon be running at St Francis. If interested, please contact Rev Mary Terry curate@st-francischurch.org.uk or 07732203452



ST
FRANCIS
LIFE WITH GOD



PARENTS OF LITTLE ONES
(P.O.L.O.)

A safe, warm, homely community for fellowship and encouragement; sharing the highs and lows of discipleship as parents.

Tuesdays in term-time

9.45am -11am

St Francis Church - Chapter Rm



YOUTH THIS SPRING



ST.F
YTH

YRS 6-9

- FRIDAY NIGHT YOUTH IN THE LOUNGE 6PM TO 7.30PM
- SUNDAY AM STARTING IN CHURCH @ 11AM HEADED TO THE YOUTH LOUNGE FOR BREAKFAST AND DISCIPLESHIP

YRS 10-13


- FRIDAY NIGHT YOUTH IN THE LOUNGE 7.30PM TO 9PM
- SUNDAY AM STARTING IN CHURCH @ 11AM HEADED TO THE BEATRICE ROOM FOR BREAKFAST AND DISCIPLESHIP
- SUNDAY PM DISCIPLESHIP IN THE LOUNGE @ 7PM
- 1ST SUNDAY OF THE MONTH - LIFE SKILLS IN THE LOUNGE FROM 6PM, DINNER AND DISCIPLESHIP

This term we have Breakfast, Juice & Jesus on a Sunday morning – exploring mental health, playing games and discussing what positive mental health looks like and who you can speak to/what you can do when you're feeling low.

On Sunday Nights we are sharing meals, playing games and exploring faith together.

On Friday Nights – £1pp entry - great fun playing board games, crafts, team sports, pool, xbox, arcade machine and table tennis – there is something for everyone and everyone is welcome.

Some things are term-time only, contact youth@st-francischurch.org.uk for info.



Check out the What's On tab at www.st-francischurch.org.uk for upcoming events

ZUMBA

Dance yourself fit to a fusion of Latin and international music, combined with a heart-pumping cardio workout that's easy to follow and fun to do! St Francis Church Hall, Beatrice Road – Wednesday 9.45-10.45am / £7. For class details contact Lisa Brewer 07941307683. Licenced Zumba instructor.

what's coming up: April

SATURDAY 1ST APRIL | 2-4PM | EASTER EGG HUNT

Old Sarum Community Centre, On The Green, £1

SUNDAY 2ND APRIL 10AM | ALL AGE SERVICE

Join us as for Palm Sunday. There'll be lots of games, fun and creativity as we worship together in our service.

SUNDAY 9TH APRIL 10AM | EASTER SUNDAY

Delicious brunch followed by activities, crafts, bible story and some catchy action-songs. Come join us for our Messy Easter all in a safe and welcoming environment for all ages.

SUNDAY 16TH + 23RD APRIL 10AM | SUNDAY GATHERING

For both these Sundays we get to look into a theme deeply. 3-7 year old's will have the opportunity to go to Hope Kids - a group that is tailored to this age group with lots of fun, creativity, and stories.

SUNDAY 30TH APRIL 10:30AM | ST.FRANCIS CHURCH

APCM Service- Hope and St. Francis are coming together for their annual general meeting, BYO picnic and join us after for lunch. (**Please note:** service at St.Francis NOT the community centre.)

MISSION FOCUS



MAF MISSION AVIATION FELLOWSHIP – ONE OF THE OPERATIONS WE SUPPORT.

MAF is an organisation that helps isolated communities in need, using small planes to access remote locations. The concept started in 1945 when 2 young pilots felt that this was something that they could be involved with; starting with one plane, it has grown enormously, and now operates 138.

MAF's vision is to 'To see isolated people changed by the love of Christ.'

- Imagine if your community had no roads and little access to the outside world.
- How would you or your family reach a doctor if you're sick or injured? How can you receive an education or job opportunities?
- This is the reality for millions of people.
- Jungles, mountains, swamps, insecurity and a dilapidated infrastructure are all barriers to receiving physical and spiritual care and a hope for the future.

MAF Papua New Guinea is currently the biggest programme – comprising 9 Cessna 208 aircraft, 35 international & 99 national staff. They fly more than 100 partners in the ongoing battle to meet desperate daily needs.

Working for MAF is more than just a job. It is a team of people of many nationalities empowered to fulfil God's calling using many different skills. Without MAF many other charities would be unable to function fully. The fleet of aircraft is made up of very small light planes which can land on basic grass runways often situated amongst mountain ranges. Some planes can even land on water when there are floods.

The areas covered by MAF include Australia/Oceania, Americas, Asia & Africa. The staff come from all over the world, and are not just pilots but all the other people needed to maintain aircraft, runways, communications between governments, technology & finance etc. Many of the staff bring their families, the children going to the village school & the parents being involved with other aspects of life which add benefits to the organisation. One employee said "I am neither a pilot, nor a missionary but I am using my gifts to lead, serve & help through the lifesaving work of MAF".

MAF has an excellent website if you want to know more about them! www.maf-uk.org

Sally Reed



DID YOU KNOW? SOME FACTS ABOUT CRUCIFIXION

Crucifixion, as a means of execution, was used by the Persians, Carthaginians and Macedonians, as well as by the Romans, but it was not used by the Jews. Under their law, Jews were permitted to use only stoning, burning, strangulation or decapitation.

When crucifixion was first introduced in ancient Rome it was used only for slaves, pirates and enemies of the state, though later its use was extended to lower class citizens. Both men and women were crucified.

Crosses used for crucifixion in Roman times were of many shapes. The earliest form was probably a simple vertical stake but then it became usual to add a crossbar, either at the top (to make a T-shape), or lower down. St Andrew was reputedly crucified on an X-shaped cross.

Death by crucifixion was designed to be slow, painful, gruesome, humiliating and public. In Roman times it was generally used as a means of dissuading others from perpetrating similar crimes, with the victims usually left on display as a warning.

Those condemned to crucifixion were stripped naked and whipped (scourged), then led through the most crowded streets to their place of execution, bearing a signboard giving their name and their crime. The signboard was later nailed to the cross for all to see. Hence, Jesus carried the signboard "Jesus of Nazareth, King of the Jews".

The condemned was often made to carry his or her own crossbar to the place of execution (not the whole cross, which would have been much too heavy).

Soldiers were assigned to guard the place of crucifixion and were not allowed to leave until the victims were dead. To speed up the process, they often broke the legs of the victims, or impaled them with a spear.

The length of time needed to reach death ranged from hours to days. Research indicates that cardiac arrest, dehydration, infection from the wounds inflicted and breathing problems often played a part in the cause of death. Jesus' crucifixion started between 9.00 a.m. and noon and was over by 3.00p.m.

Crucifixion was abolished in the Roman Empire by Constantine (the first Christian emperor) in 337 A.D. Today, it is still used as a rare form of execution in Saudi Arabia, though the victims are now usually killed first and then displayed.

EXPLORING ST FRANCIS CHURCH – OUR SOLAR PANELS

Last month we described the Prayer Room, which is open to everyone. This time we're talking about our solar panels, which most people in the congregation, let alone in the Parish as a whole, do not realise we have. Did you?

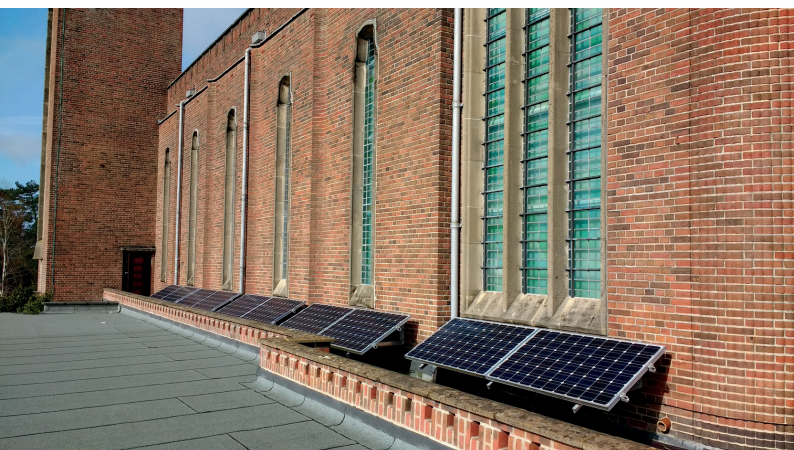
They are not on the recently replaced main roof; that has been designed to support the weight of solar panels if the church ever has the money to install them, but we could not afford them at the time as well as building the new roof. They are on the roof of the south aisle – the part of the church facing Beatrice Road, where the new extension has been added, and unless you are extremely tall (or live opposite) you won't see them.

There is a flat roof round most of the church at that level. There are doors onto it from the tower, and from the Lady Chapel – the raised part of the main space at the east end of the building.

Apparently, the architect had the idea that we could hold open-air services on the roof in the summer, but modern health and safety rules, and difficulties of access, now rule that out.

Our 10 solar panels were installed and commissioned in November 2021, as a gift from a member of the congregation. They are not fixed to the aisle roof but to brackets on the church wall, so that there is access underneath to clear out any rubbish that accumulates. This arrangement also allows us to remove the panels as a temporary measure if we need to work on the flat roof of the aisle or to erect scaffolding on it. (We are allowed to dismantle the system, but the suppliers insist that only they can reconnect and recommission it if it has been dismantled)

To date we have generated just over 22,000 kWh and received over £9,000 in Feed-in-Tariff payments.



THANK GOD FOR SPRING FLOWERS

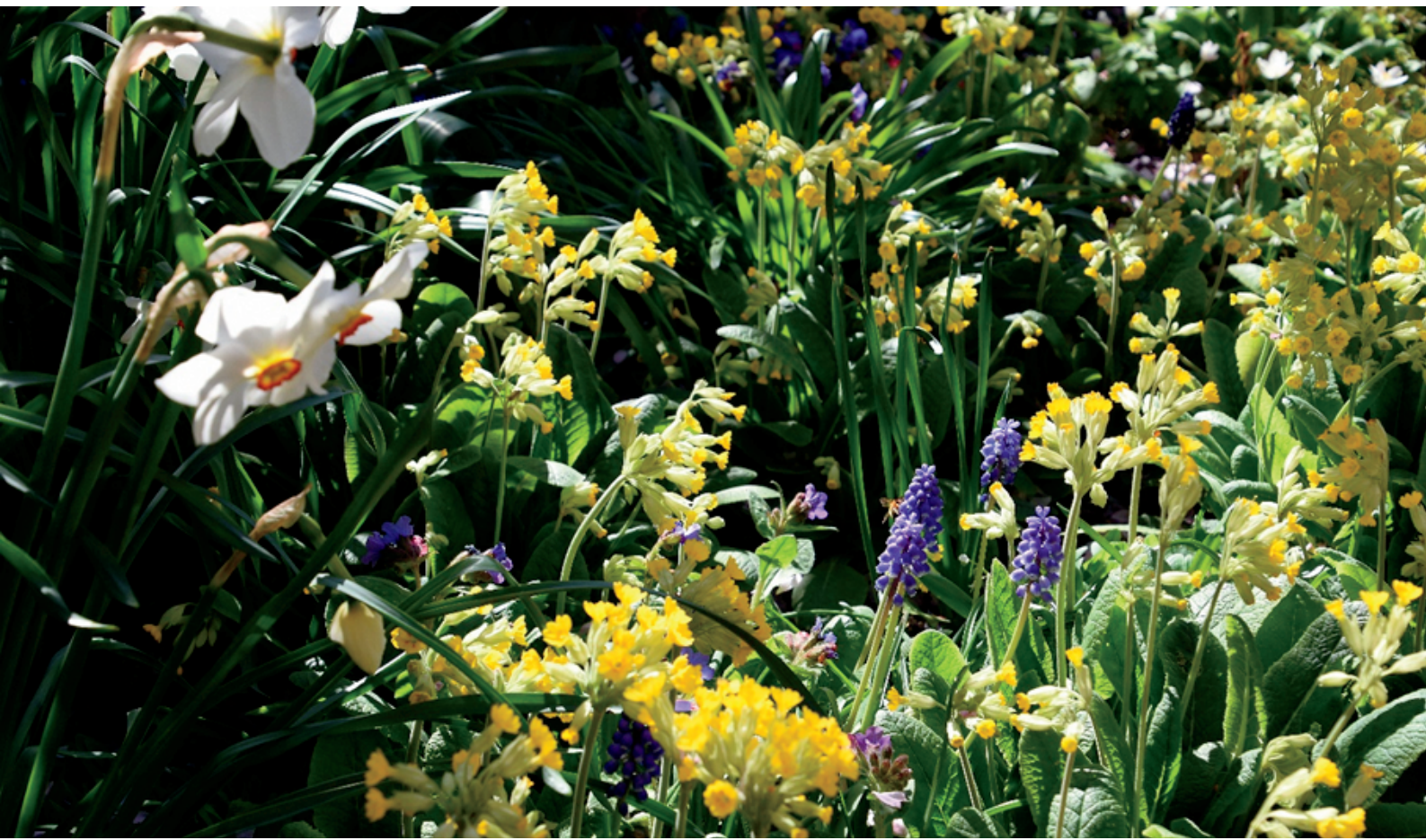
What a winter it's been! Long spells of frost, dreary grey anti-cyclonic gloom and heavy rain seem to have alternated for months on end. Normally I would have been out in the garden getting ready for Spring by now – but not this year. It's been much too cold for me - and for the plants, many of which are well behind this year.

However, things are slowly changing. Snowdrops and hellebores have already appeared and those early harbingers of Spring, the celandines, are also beginning to poke up their noses. There's even the odd daffodil to be seen. And how they lift the spirits!

Who could scorn the bright yellows, pale creams and occasional flashes of pink and orange as the daffodils emerge in our gardens and along the roadsides? And their smell is something very special. Not for the daffodil the sweet, sometimes sickly perfume of roses, gardenias and the like, but the fresh, clear, absolutely unique daffodil smell of Spring.

The early Spring flowers are especially welcome as they are the heralds of more delights to come. Hard on the heels of the daffodils come hyacinths, tulips, bluebells and all the blossom on trees large and small. Thank God for them all in their splendour, and for the promise of better weather to come

Jean Filtness



A TRADITIONAL EASTER RECIPE – SIMNEL CAKE

This cake is a traditional recipe for Easter. The almond paste balls represent Jesus' disciples (the eleven faithful ones, i.e. no Judas Iscariot) but you can make the cake without almond paste, using little chocolate eggs instead of the almond paste balls if preferred.

INGREDIENTS

150g (6oz) butter or margarine
150g (6oz) soft brown sugar
3 eggs, lightly beaten
200g (8oz) self-raising flour
½ tsp ground cinnamon
½ tsp ground nutmeg
100g (4oz) sultanas
300g (12oz) currants
50g (2oz) ground almonds
2 X 200g (8oz) packets of almond paste



1. Cream the fat and sugar till light and fluffy.
2. Beat in the eggs a little at a time.
3. Fold in the dry ingredients and then stir in the sultanas, currants and ground almonds.
4. Put half the mixture into a greased and lined 18cm (7-inch) cake tin.
5. Roll out both packets of the almond paste thinly enough to cut circles around the cake tin: reserve the trimmings.
6. Place one circle on top of the mixture in the cake tin. Cover with the remaining cake mixture.
7. Bake at 180 degrees (Gas 4) for 1-1 ½ hours. The top of the cake should spring back when touched to indicate it is cooked. Do not use a skewer to test, as the almond paste will stick to the skewer. Turn out and leave to cool.
8. Place the second circle of almond paste on top of the cake. Make 11 small balls out of the almond paste trimming and place them round the top.



Ladybirds

Pre-School

Ladybirds Pre-school is your local childcare setting that has long established ties within our community located in St Francis Church hall. We are a free flow setting, this allows the children to decide where they want to learn, be it in our indoor area where their imaginations and creativity are inspired or in our exciting outside space.

We currently have spaces so please get in touch using the contact information below if you would like more information or to arrange a visit.



Ladybirdssp1@gmail.com 01722 502234



LIONS CLUB of SALISBURY & DISTRICT (CIO)

"We Serve"
CHARTERED 1962

Charity Number 1180342

Prostate Cancer testing Day – Save the Date!

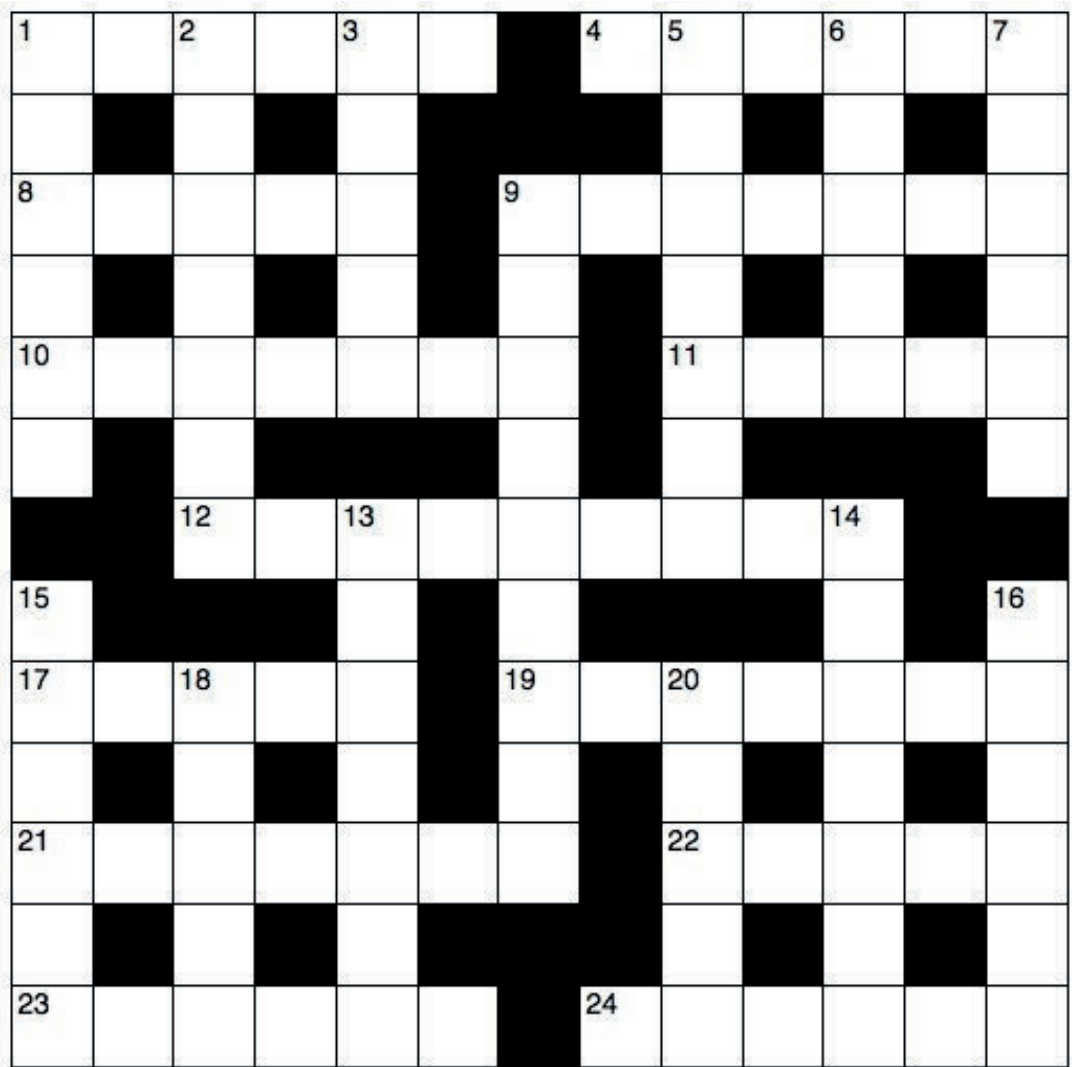
The **Lions Club of Salisbury and District** is a non-profit, all volunteer, organization that has been serving the community for over 60 years. The service project we have chosen for this year is a **Prostate Cancer Testing Day** on **May 20th, 2023**.

Prostate Cancer is the most common cancer in men, but most men with early prostate cancer don't have symptoms. Prostate cancer is not always life-threatening. But when it is, the earlier you catch it the more likely it is to be cured. The PSA blood test is the first step in the prostate cancer diagnostic pathway. *It is a cheap, safe, and effective way of identifying men who would benefit from further testing.*

200 Free tests will be carried out on the Testing Day in conjunction with Graham Fulford Cancer Trust at **St. Francis Church**, Salisbury, between **11am and 3pm**. Men 40 & over will be invited to register for a free test on the Graham Fulford Cancer Trust website in the coming months.

For more information, contact John M Smith
John@mitreccs.net
Lions Club of Salisbury & District
PSA Project lead

CROSSWORD



ACROSS

- 1 Relating to the whole universe (6)
- 4 The disciple who made the remark in 8 Across (John 20:24) (6)
- 8 'Unless I see the nail marks — — hands, I will not believe it' (John 20:25) (2,3)
- 9 He urged King Jehoiakim not to burn the scroll containing Jeremiah's message (Jeremiah 36:25) (7)
- 10 Baptist minister and controversial founder of America's Moral Majority, Jerry — (7)
- 11 'Look, here is — . Why shouldn't I be baptized?' (Acts 8:36) (5)
- 12 Repossessed (Genesis 14:16) (9)
- 17 Port from which Paul sailed on his last journey to Rome (Acts 27:3-4) (5)
- 19 'Moses was not aware that his face was — because he had spoken with the Lord' (Exodus 34:29) (7)
- 21 Roonwit, C.S. Lewis's half-man, half-horse (7)
- 22 Grill (Luke 24:42) (5)
- 23 'The lot fell to Matthias; so he was added to the — apostles' (Acts 1:26) (6)
- 24 'I was sick and you looked after me, I was in — and you came to visit me' (Matthew 25:36) (6)

DOWN

- 1 Coastal rockfaces (Psalm 141:6) (6)
- 2 Academic (1 Corinthians 1:20) (7)
- 3 Publish (Daniel 6:26) (5)
- 5 For example, the Crusades (4,3)
- 6 11 Across is certainly this (5)
- 7 He reps (anag.) (6)
- 9 Liberator (Psalm 18:2) (9)
- 13 Man who asked the question in 11 Across was in charge of all her treasury (Acts 8:27) (7)
- 14 They must be 'worthy of respect, sincere, not indulging in much wine' (1 Timothy 3:8) (7)
- 15 The human mind or soul (6)
- 16 'O Lord, while precious children starve, the tools of war increase; their bread is — ' (Graham Kendrick) (6)
- 18 'We played the flute for you, and you did not — ' (Matthew 11:17) (5)
- 20 Bared (anag.) (5)



The Cafe is open every Friday from 9.30 - 11.30am and is open to anyone, offering fresh filter coffee, tea, home-made cakes and biscuits, all for £1 per item, including free refills. We have customers of all ages and both men and women, so if you fancy a local, good, cup of coffee, why not try us, and meet some new friends at the same time. You will see the “Friday Cafe” boards outside the Church entrances, to show the way in. If you have any questions, please ring Penny on 01722 504326.

A Job That Gives Back

We are looking for wonderful people in Salisbury to help an older person to stay in their own home. Pay starts at £12 per hour with paid wait and travel time.

Call us to find out more 01722 443 559
or visit our website www.homeinstead.co.uk/salisbury-and-romsey



DOWN: 1, Cliffs. 2, Scholar. 3, Issue. 5, Holy war. 6, Moist. 7, Sphere. 9, Deliverer. 13, Candace. 14, Deacons. 15, Psyche. 16, Stolen. 18, Dance. 20, Debar.

ACROSS: 1, Cosmic. 4, Thomas. 8, In his. 9, Deliah. 10, Falwell. 11, Water. 12, Recovered. 17, Sidon. 19, Radiant. 21, Centaur. 22, Broil. 23, Eleven. 24, Prison.



Crossword Answers

Established friendly & professional Heating company supporting your oil, gas, & LPG appliances.



- ◆ Highly efficient heating solutions designed & installed.
- ◆ Bespoke swimming pool heating solutions provided, with smart controls.
- ◆ Underfloor heating design, installation & overhaul.
- ◆ We also offer emergency breakdown, repairs, servicing & Certification.

t: 01722 417873 | e: sales@ahs-heating.co.uk



www.ahs-heating.co.uk



I HAVE NEVER...

I have never stood, plaster dust in hair, looking for my home, though it's no longer there

I have never felt the earth shift beneath my feet, nor had to face the complete loss of all that I held dear

Never been traumatised – frozen by fear

I have never seen my home bulldozed or had to leave all of those who care for me.

I have never not been free to go where I wished, nor had a world willing me not to exist.

I have never held my daughter's hand as we left behind dry land, nor pretended I wasn't scared of the water – the dark deep sea, as she shivered by me,

My daughter.

It's possible I never will. My river of life may flow smoothly downhill. But what if I do?

Where would we go if once we could manage to slip away free, who would there be to speak out for me?

Please, Lord, let us never forget that even the people we haven't yet met are real – they feel, they hope, they hurt, they cry

As I would too if in their shoes,
As I would choose to try to find my brighter day
In any way I could
I would.

Wouldn't you?



OLD SARUM AND LONGHEDGE ANNUAL

EASTER EGG HUNT

SATURDAY APRIL 1ST

OLD SARUM COMMUNITY CENTRE

2-4PM

£2 PER CHILD

**Keep up to date on event information via
Facebook: HOPE Church Salisbury or
email: oldsarum@st-francischurch.org.uk**

Follow the scavenger hunt, complete the challenges and crack the code to win your prize!

Join us for refreshments and cake at the community centre after.



**Hope
CHURCH**